



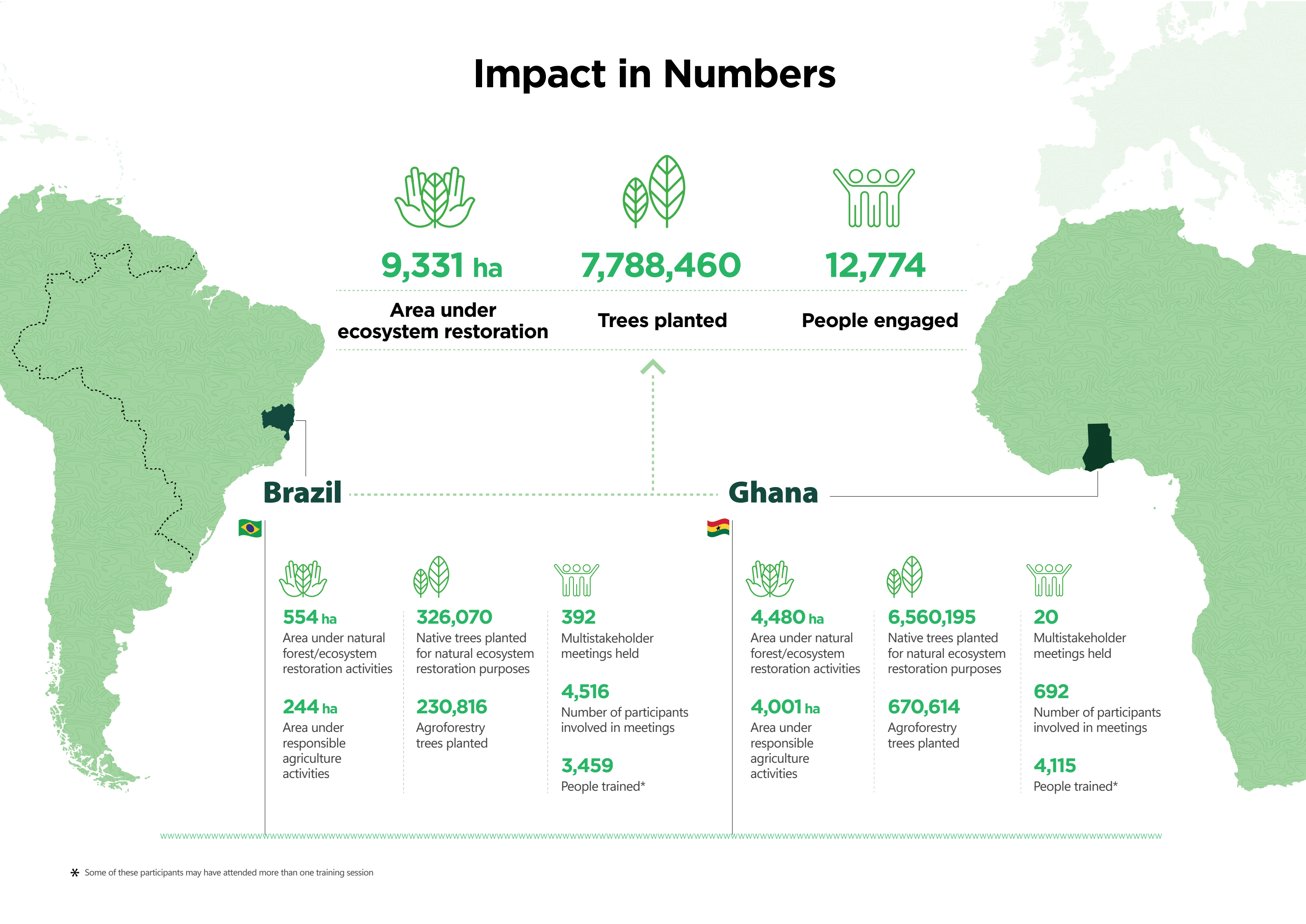
iNovaland®

**MAY
2025**

Corporate Report

**Restoring landscapes for
people and planet**

Impact in Numbers



* Some of these participants may have attended more than one training session

Executive summary

iNovaland is an **international group of specialized companies dedicated to restoring degraded forest landscapes**. Guided by principles of ecosystem integrity, inclusion, and sustainable development, we collaborate with investors, funders, businesses, local communities and governments to deliver long-term environmental, social and economic benefits.

We specialize in curating and managing high-integrity, forest landscape restoration projects, offering investors and funders unparalleled access to sustainable investment opportunities that deliver impact for people, nature and the climate. Our services spans **project development and incubation, technical assistance, financial structuring, on-the-ground implementation and knowledge exchange**. Through strong partnerships, place-based and data-driven solutions, we bridge the gap between funding and impactful restoration, ensuring measurable outcomes and long-term success.

This report coincides with our **fifth anniversary**, and we celebrate the progress made and the foundation laid towards a sustainable future:

Climate impact

10 million tonnes of CO₂
to sequester between now and 2050.

Restoration in progress

9,331 hectares
under restoration in South America and West Africa.

Tree planting effort

7.7 million trees planted
to enhance biodiversity and carbon sequestration.

Agroforestry expansion

Over 900,000 agroforestry trees integrated
into sustainable, resilient agriculture systems.

Enhanced capacity building

7,574 individuals trained
equipping communities with skills in agroforestry, fire prevention and sustainable livelihoods.

At iNovaland, transparency and ethical governance are at the core of our operations. We ensure financial accountability and environmental integrity through compliance with international sustainability frameworks, including **EcoVadis, CDP and the Science Based Targets initiative**. Our policies on **anti-corruption, human rights and responsible resource allocation** reinforce our commitment to ethical business practices.

Looking ahead, we are committed to scaling our impact by:

- › Expanding our restoration footprint with **new projects** in West Africa and South America
- › Leveraging **technology and AI** for enhanced monitoring and impact measurement
- › Strengthening **local partnerships** for long-term project sustainability

As we reflect on our progress, we extend our sincere gratitude to our funders, partners and the communities we work with. Your trust has been crucial in transforming degraded lands and empowering the people who live there. To accelerate restoration, we recognize the need for continued commitment and resources, and **we seek further engagement with investors, funders, businesses and partners** to jointly scale our efforts for a thriving future for both people and nature.



Contents

- 4 Executive summary
- 7 A message from the co-founders
- 8 Who we are
- 8 Our mission
- 8 Our group
- 10 Our clients
- 12 Our work
- 14 Maintaining and restoring ecosystem integrity
- 24 Ensuring inclusion and stakeholder engagement
- 30 Supporting green growth and development
- 38 Integrity and transparency
- 38 Optimized resource allocation
- 39 Ethical business practices
- 40 Contribution to Sustainable Development Goals
- 41 Transparency and accountability
- 42 Looking ahead: Accelerating to 2030
- 46 Thank you from us
- 49 Contact information

A message from the co-founders

Our journey with iNovaland is a story decades in the making. We met through the WWF New Generation Plantations (NGP) programme, planting the seeds of a long-term relation that would one day blossom into iNovaland. At the time, we didn't know that our shared passion for forestry and sustainable development would evolve into an organisation that now operates across continents.

We had seen a lot, working in both the private sector and NGOs, learning what worked and what didn't. This led to a simple, powerful vision: to demonstrate that forest landscape restoration can be done ethically and economically, benefiting people, nature and the climate. Five years ago, we took our first steps by launching NGPTA Ltd, registered in Portugal, focused on providing technical assistance for restoration projects. From there, iNovaland was born, now with specialized group of companies providing tailored services: financial management, technical assistance and project implementation. Today, as we present our first corporate report, we take a moment to reflect on our achievements, on the challenges we have faced and on the exciting opportunities that lie ahead.

Much like the trees we plant, iNovaland has grown fast and strong. What began as a two-person effort has expanded into a team of more than 20 professionals across three continents, bringing expertise to every stage of the restoration process – from project design and community engagement

to natural forest restoration, agroforestry, forest management, financial structuring and carbon certification. We take pride in the quality of our work and the impact it delivers – but what makes iNovaland unique is not just what we do, but how we do it.

The secret? Deep roots. Our teams don't just execute projects from afar, we are embedded in the landscapes we restore. We work side by side with farmers, forestry companies, communities, local and traditional leaders, government agencies, donors, researchers and local organizations, ensuring our restoration projects respond to their needs and create meaningful, lasting impact.

While we have managed to achieve remarkable impact as you will read in this report, we won't pretend this work is easy. Restoration at scale comes with financial, technical and policy challenges, but we remain relentlessly optimistic. Why? Because there is no alternative. The planet demands urgent action, and we are committed to being part of the solution.

Sincerely,

Luís and Andrew



*"Thirty years in the woods
– and we are just getting started"*

Who we are

Our mission

iNovaland is an international private group dedicated to restoring degraded forests and landscapes, generating lasting environmental, social and economic benefits. Since 2020, we have concentrated our efforts in South America and West Africa, in regions profoundly impacted by deforestation, land degradation and climate change. We collaborate with donors, funders, governments, communities, NGOs and businesses, mobilizing and directing funding towards high-quality, high-impact projects. Our work emphasizes innovative, community-driven approaches to natural forest restoration, responsible agriculture and agroforestry, enhancing biodiversity, mitigating climate change and improving livelihoods.

Our group

From our offices in Portugal, the UK, Ghana and Brazil, iNovaland delivers integrated services across the project life cycle. We connect funders with impactful projects, provide expert technical assistance and foster collaboration, leveraging extensive experience to support investors, donors, governments, communities and private sector partners in designing and implementing sustainable solutions. Our work spans the entire project life cycle, from identifying opportunities and securing funding to providing technical guidance, ensuring effective implementation and monitoring the results.



These services are channelled through our specialized entities:

NGPTA Lda

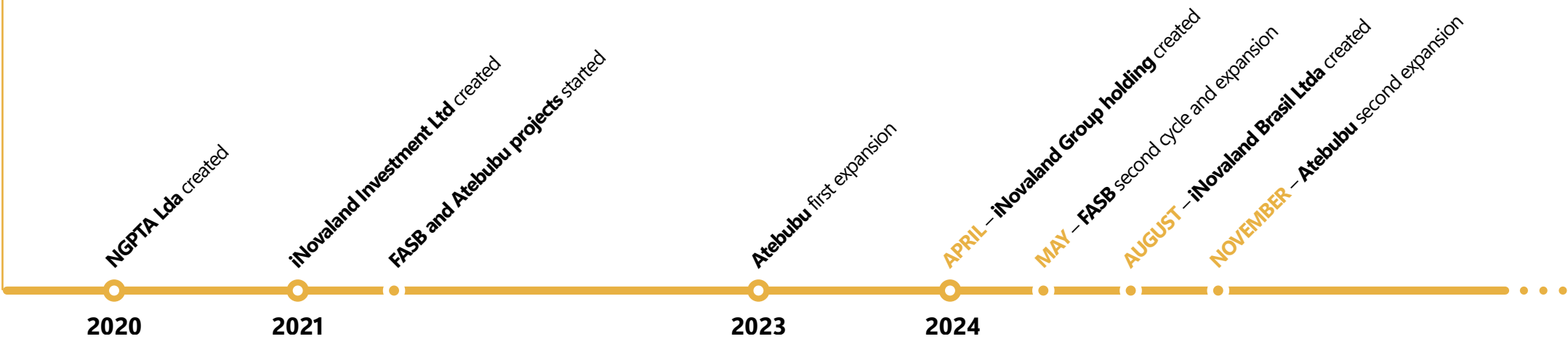
is our global technical facility, drawing in extensive practical experience. NGPTA collaborates with investors, donors, governments, communities and private sector partners to design, implement and evaluate high quality agroforestry, natural forest restoration and responsible agriculture projects, for lasting benefits for both people and the planet.

iNovaland Investment Limited

develops scalable restoration projects, secures funding, and provides business development, financial management and contractual services. Currently managing €30 million in landscape restoration funds, iNovaland Investment Ltd facilitates investment in impactful, nature-positive initiatives.

iNovaland Brasil Ltda

leads on-the-ground implementation in Brazil, translating innovative concepts into tangible results through natural forest restoration, agroforestry and responsible agriculture practices.



Our clients

At iNovaland, we believe that large-scale ecosystem restoration and sustainable development can only be achieved through strong, purpose-driven collaborations. By working with organizations that share our commitment to climate action, biodiversity conservation and community resilience, we combine expertise, resources and innovation to drive lasting change.

Since 2020, we have built a diverse network of clients which includes major multinational companies, family offices and development banks. These collaborations enable us to implement high-impact projects that not only restore landscapes but also create economic opportunities, strengthen local governance and enhance climate adaptation. We take pride in ensuring that our work is grounded in the best available science and global best practices, while also equitably involving and benefiting local communities who are at the heart of these efforts.

Each of our clients plays a crucial role in our work and scaling impact, from funding and technical expertise to scientific alignment, project co-implementation and community engagement. We welcome collaboration with organizations that are eager to drive meaningful change, ensuring that our combined efforts create lasting environmental and socioeconomic benefits.



Atine Salifu

© GARDIMA



Our work

Currently, we work in West Africa and South America with ongoing and pipeline projects in Ghana, Brazil and Chile. This report features case studies from our two flagship initiatives: the FASB programme in Brazil and the Atebubu and Wiase Forest Landscape Restoration project in Ghana. FASB was launched in the state of Bahia in 2021, and we are now in the second phase (2024 to 2026) with an expanded geographical scope covering the Hileia Baiana region in southern Bahia and northern Espírito Santo. The Atebubu and Wiase Forest Landscape Restoration – dubbed “A ‘Living Lab’ for Community and Ecological Resilience” – also began in 2021 in the Bono East region of central Ghana.



© INOVALAND

Our projects, from design to implementation and evaluation, are guided by our core principles



Maintaining and restoring ecosystem integrity

We deploy targeted interventions to restore and revitalize degraded forest ecosystems through natural forest restoration, agroforestry and responsible agriculture, driving long-term environmental resilience and socioeconomic value.



Ensuring inclusion and stakeholder engagement

We forge partnerships and initiate, execute and assess projects through active engagement and shared ownership with local communities and multiple stakeholders.



Supporting green growth, jobs and socioeconomic development

We drive economic development through livelihood enhancement, support for sustainable enterprises and job creation.



Maintaining and restoring ecosystem integrity

Ecosystem integrity is the foundation of a healthy planet. It ensures that natural systems can function effectively, support biodiversity, and provide essential services such as clean water, fertile soil and climate regulation. Our work focuses on two key areas: **natural forest restoration** and **sustainable agriculture such as agroforestry**. These efforts contribute to recovering degraded landscapes, enhancing ecosystem services, sequestering carbon and promoting sustainable livelihoods.

© MICHELE RIBEIRO, ARBORETUM PROGRAM



Total number of trees planted

7,788,460 trees

Native trees planted for natural ecosystem restoration purposes

6,886,265 trees

Well over 250 native species have been prioritized to restore natural habitats and support local biodiversity. The species have been selected through a combination of scientific and local knowledge, collaborating with universities, government crop research agencies, seed collectors, nursery operators and communities.

Agroforestry trees planted

901,430 trees

Smallholder farmers are integral to sustainable solutions. Various trees, including cashews and mangoes, are integrated into agricultural systems to improve soil fertility, provide shade for climate adaptation, meet market demands for timber and diversify food and income sources for farmers while restoring degraded landscapes.

Commercial trees planted

765 trees

Limited numbers of commercial forestry trees are strategically planted to meet market demands for timber and other forest products, reduce pressure on natural forests and contribute to local economies while adhering to sustainable forestry practices.



Total area under ecosystem restoration

9,331 hectares

Area under natural forest/ecosystem restoration activities

5,033 hectares

This includes reforesting degraded lands, protecting existing forests, and establishing buffer and ecological zones to prevent further degradation.

Area under responsible agriculture activities

4,245 hectares

This includes agroecological practices such as crop rotation, intercropping and organic farming to enhance soil health and reduce environmental impact.

“We know that with more trees we’ll have a better quality of life. More drinking water, free and clean air, all kinds of animal species. Reforestation is also very important so that we can protect our soil and support the traditional communities that survive on our standing forests.

Matias Santana da Conceição

PRESIDENT OF COOPLAJÉ, A NURSERY COOPERATIVE SUPPORTED BY FASB



© INOVALAND

Scaling up through partnerships

— Brazil —

FASB has embarked on an exciting second phase (2024-2026) in the Hileia Baiana, a vital biodiversity hotspot within Brazil’s Atlantic Forest. A new €8 million investment, fuelled by increased funding from KIRKBI and strategic partnerships with Suzano, BNDES and FUNBIO, will allow FASB to maintain its community-led approach while dramatically expanding its landscape-scale impact on forests, biodiversity and communities. This next phase promises significant advancements in forest restoration and biodiversity conservation, including creating a 500km ecological corridor connecting 170,000 hectares of forest fragments.

— Ghana —

The Atebubu and Wiase Forest Landscape Restoration project is revitalizing a critical ecosystem and biodiversity hotspot in Ghana through natural forest restoration and agroforestry. Recognizing the vital link between healthy ecosystems and thriving communities, natural forest restoration is a key component of the project. Working in partnership with Ghanaian forestry company APSD, over 6.7 million native trees have been planted on 4,480 hectares to begin the process of forest landscape restoration. All these trees have been raised in an onsite nursery, with over 500 local people employed during peak planting.

Carbon sequestration

We are directly addressing the climate crisis by actively removing carbon from the atmosphere. Our projects have capacity to sequester more than **10 million tonnes** of CO₂ by 2050. We aim to double our capacity by 2030, through tree planting, to store over 20 million tonnes of CO₂ by 2050.

Through globally verified carbon credits, equitable carbon revenue sharing and strong community engagement, we ensure that climate action translates into tangible economic opportunities for those at the forefront of restoration. By prioritizing lasting impact, local leadership and community-led solutions, we are not just mitigating climate change – we are reshaping landscapes and economies for a more sustainable and climate-resilient future.



Verifying carbon sequestration

Our Atebubu and Wiase project is currently undergoing validation under the Verra VCS-CCB standards, which will verify how much carbon it's projected to sequester over the next 30 years. Initial results indicate that from 2021 to 2024, the areas restored have already sequestered an estimated 46,300 tonnes of CO₂. Selling verified carbon credits will generate economic opportunities for local communities as well as contributing to global climate mitigation efforts.

For FASB, we are in the process of registering community-led restoration projects under the Open Forest Protocol ARR standard. Carbon credits will play a key role in securing the permanence of these restoration efforts, directly benefiting the local communities driving change on the ground.

Biodiversity and people

Our projects are specifically designed to enhance both community and ecological resilience, two critical factors for protecting and improving biodiversity. Through continued biodiversity monitoring, we aim to showcase how our restoration efforts not only boost biodiversity but also enhance key ecological components such as soil health, water quality and watershed replenishment. These factors are essential in strengthening ecological resilience and ensuring the long-term sustainability of ecosystems and the communities that depend on them.

Looking ahead, we are committed to integrating biodiversity monitoring and enhancement into every stage of our restoration efforts as we seek to cultivate vibrant ecosystems, protect natural habitats, and foster a sustainable future for both nature and people.

“I am very happy to see some of my cashew fruiting in just three years because I will be getting my first income from it. What I also observed during the flowering and fruiting stages of the cashew was the constant visitations of insects, notably bees and butterflies, and I have been planning to get some beehives under the cashew trees to trap these bees for honey. This way I can get multiple sustainable income streams to improve my standard of living.

Robert Manu

CASHEW FARMER, GHANA



Biodiversity monitoring in Ghana

In Atebubu, we've carried out biodiversity assessments using both traditional survey methods and innovative e-DNA technology. This approach provides a robust baseline for measuring the project's impact on biodiversity over time. To carry out the assessments, we worked with local communities in collaboration with Ghanaian NGO Aqualife Conservancy and experts from the Kwame Nkrumah University of Science and Technology.

Survey results revealed that the project area supports diverse flora and fauna, including nationally and globally threatened species. The 264 plant species include a number of protected species, while animal species range from butterflies to bats, fish to frogs. Critically endangered hooded vultures and near-threatened patas monkeys were also recorded, and the area is also a potential stronghold for the West African crocodile (*Crocodylus suchus*).



Restoring the Atlantic Forest

The FASB project is located within Brazil's Atlantic Rainforest – one of the world's most threatened biodiversity hotspots and a flagship landscape of the United Nations Decade on Ecosystem Restoration. It's one of the most biodiverse ecosystems on Earth, with exceptionally high rates of endemic species. FASB is supporting projects to protect, restore and reconnect critical habitats and the biodiversity they support.

To date, seed collectors and nurseries supported by FASB have collected 4,586 kg of seeds and produced 372,349 seedlings of 271 native species, including rare and endemic trees. We are planning to carry out biodiversity assessments to understand how we can strengthen our efforts to enhance habitat connectivity, protect and restore biodiversity and strengthen ecosystem resilience.



© INOVALAND

“Working in a public prosecutor's office that defends the environment, I can say that FASB has added to our efforts, especially in actions to restore environmentally protected areas. What sets it apart is that it has taken an important look at communities that don't have the opportunity to access resources for their projects. The sense of belonging of the members of these communities, after the start of FASB's work, is the reason for several successful actions to recover native vegetation.”

Fábio Fernandes Corrêa

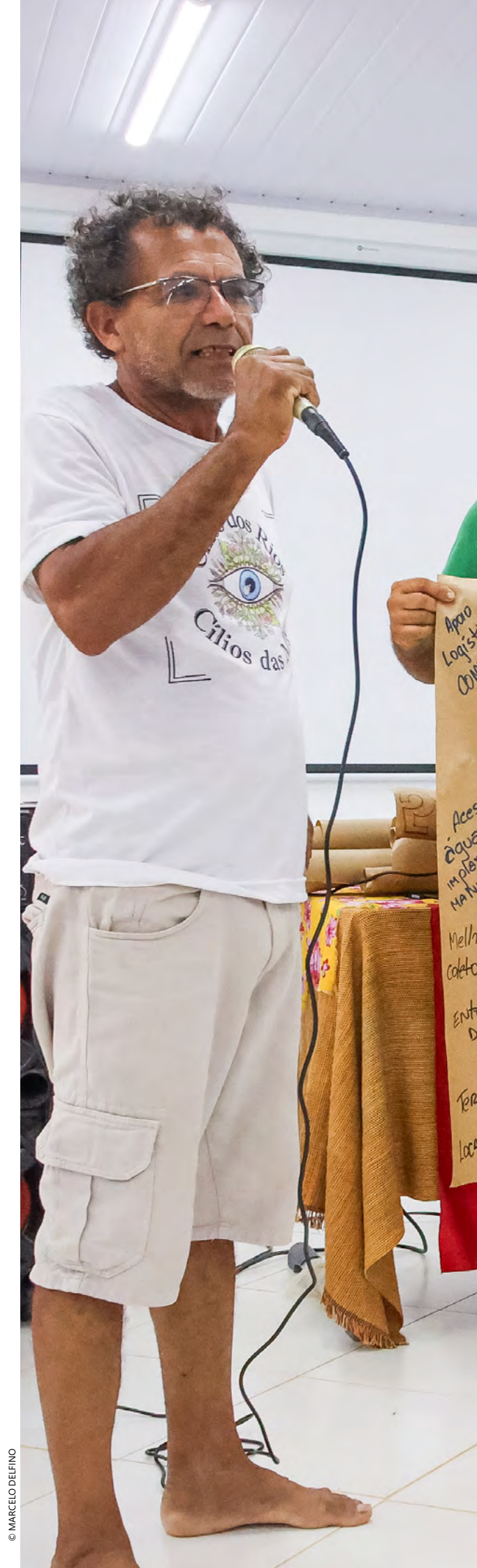
PROSECUTOR, BAHIA STATE PUBLIC PROSECUTOR'S OFFICE



Ensuring inclusion and stakeholder engagement

Inclusion and stakeholder engagement are at the heart of our work. We believe that sustainable development can only be achieved when all voices are heard, and all stakeholders are actively involved in decision-making processes. Our approach ensures that communities, governments, private sector partners and other stakeholders are not just beneficiaries but work collaboratively in shaping and implementing the landscape interventions that iNovaland promotes.

There are several layers to our multi-stakeholder engagement where community members are active collaborators and part of project governance structures. This ensures more inclusive decision-making and more effective management, helps solve problems and co-create solutions, and builds social alliances.



© MARCELO DELFINO



Engagement methods

Collaborative and consultative sessions

- › Facilitating joint discussions for decision-making

Community meetings

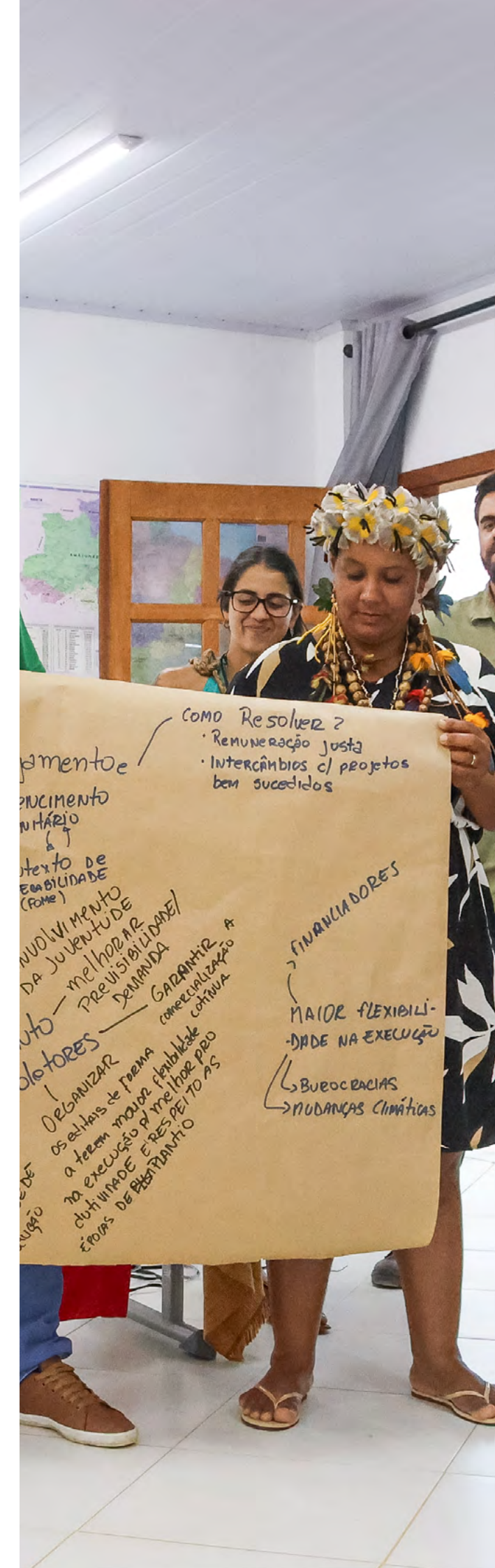
- › Forums for project updates, alignment and monitoring

Peer learning

- › Knowledge exchange to enhance skills and best practices

Informal engagements

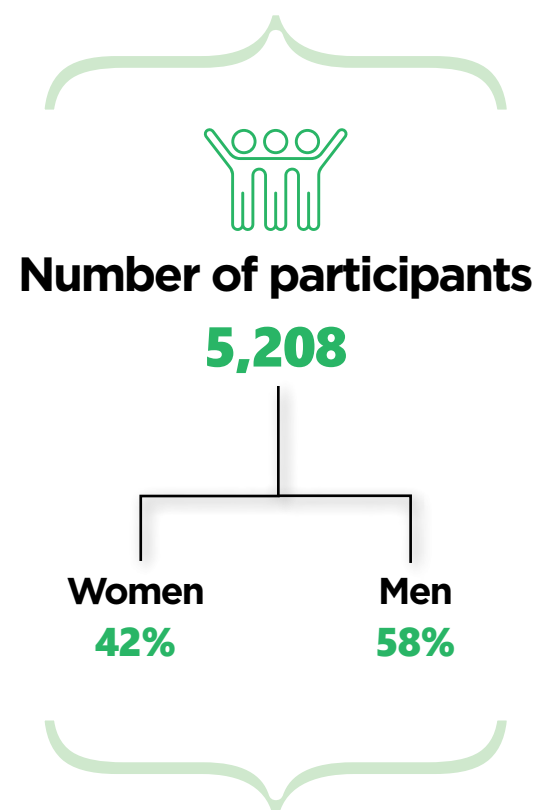
- › Spaces for open dialogue and relationship-building



Multistakeholder platform meetings

We work with communities and other local stakeholders to establish and facilitate multistakeholder platforms, locally led governance structures that oversee the projects.

To foster collaboration and ensure that diverse perspectives are considered, we regularly convene multistakeholder meetings. These gatherings provide a platform for dialogue, knowledge sharing, and collective co-creation and problem-solving.



These meetings, gatherings and dialogues have been instrumental in building trust, aligning priorities, building social alliances and ensuring that our initiatives are responsive to the needs and aspirations of all.



Cynthia Agyeiwaa

© KWAME DANSO

Community meetings, workshops and consultations

We maintain a continuous programme of meetings, workshops and consultations with project developers, farmers, community members, local leaders, academia and other partners.

These engagements are designed to:

› Ensure inclusive stakeholder representation

We create accessible spaces where all voices are heard, enabling diverse perspectives to inform project strategies and decision-making.

› Cultivate a collaborative restoration ecosystem

We aim to build a strong, interconnected community around restoration initiatives and a sense of shared ownership and collective responsibility.

› Facilitate peer and technical learning

By disseminating best practices, technical expertise and innovative solutions, we drive continuous improvement in restoration methodologies.

In the coming years, we plan to expand our outreach efforts, ensuring that even more voices are heard. We will continue working with all relevant stakeholders to co-create solutions that address their needs and priorities.



© INOVALAND

Engaging with traditional leaders in Ghana

In April 2024, we reinforced our strategic partnership with the Dwan Traditional Council in Ghana, which plays a pivotal role in local governance and has a deep knowledge of local ecosystems and community dynamics. Discussions centred on project progress, strategic alignment with community insights, and equitable sharing of carbon co-benefits. Integrating traditional knowledge enhances the resilience of our projects and helps achieve shared strategic objectives.

Forests and carbon co-benefits workshop

Before introducing a carbon credit programme as part of our project in Ghana, we convened a consultation workshop to discuss forest restoration and carbon co-benefit strategies. It brought together over 80 stakeholders, including farmers, traditional leaders and industry representatives, to agree a shared vision for equitable benefit-sharing and integrating tree planting into livelihood development. Strategies were developed to mitigate key challenges, including bushfires, land acquisition and seedling supply, with a focus on women's

economic empowerment through capacity building and access to cash crop seedlings.

To reach a wider audience, we also we hosted a live talk show on local radio. The show featured a farmer representative, a local leader and our project staff, discussing how carbon markets can support community livelihoods, respect land rights and ethically benefit farmers. Conducted in Twi, the local language, the session provided an opportunity for real-time interaction, with listeners calling in to ask questions and contribute to the conversation.



Supporting green growth and development

Green growth is central to our vision for a sustainable future. We foster economic development while safeguarding natural resources by promoting nature-positive economic activities. We provide training, build capacity and support local enterprises, ensuring that the benefits of green growth are accessible to all, especially those most vulnerable to climate change. We focus particularly on smallholders, empowering them with the knowledge and resources to implement sustainable farming practices such as agroforestry systems, enhancing their livelihoods and contributing to landscape restoration.



Agroforestry: Cultivating green growth and resilience

Agroforestry is a cornerstone of iNovaland's strategy for green growth and resilient landscapes. Integrating trees into agricultural systems brings multiple benefits – including improving soil health and water retention, increasing and diversifying farmers' incomes, and contributing to climate change mitigation and biodiversity conservation.



4,245 hectares of smallholder farmland

is being farmed sustainably using agroforestry and similar systems, with **901,430** agroforestry trees planted.

Over 1,200 smallholders

have adopted agroforestry and resilient agriculture practices.

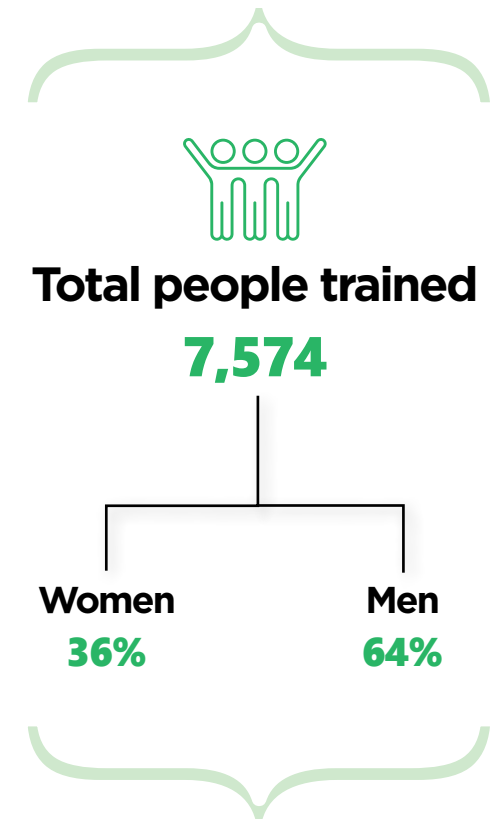


© INOVALAND

Training for farmers and communities

We provide training to individuals and communities, enabling them to participate in sustainable economic activities and equipping them with the skills needed to thrive in a green economy.

These training programmes cover a wide range of topics, including sustainable agriculture, silviculture practices, agroforestry, fire prevention and management, eco-tourism, nursery bed management and seedling handling, and green entrepreneurship. We collaborate with experts to provide communities with technical assistance and resources to incubate and scale their initiatives and create jobs.



Key aspects of our agroforestry initiatives

Smallholder focus

We prioritize working with smallholders, providing them with the knowledge, high quality seedlings, resources and support they need



Species diversity

We promote the integration of a variety of tree species, including indigenous trees, fruit trees, cash crop and timber trees, to meet diverse household and community needs as well as enhance ecosystem resilience



Training and capacity building

We offer comprehensive training programmes on agroforestry techniques, nursery management and sustainable harvesting practices



Ecological benefits

Agroforestry contributes to carbon sequestration, soil fertility, water conservation and biodiversity enhancement



Livelihood diversification

Agroforestry helps farmers diversify their income streams, reducing their reliance on single crops and enhancing their economic stability



Investing in community-led initiatives

During the first phase of our FASB programme between 2021 and 2024, we invested nearly €3 million into a portfolio of 45 locally led projects. As well as promoting ecological restoration, many of these projects sought to create socioeconomic value and livelihood opportunities.

A good example is the “Cheiros e Saberes da Mata Atlântica” (Fragrances and Flavours of the Atlantic Forest) project, led by 20 Quilombola families (descendants of enslaved Africans) from the Ribeirão community. This community-run business sells artisanal soaps and essential oils extracted from native forest plants and its own agroforestry plantations. FASB’s investment will continue to support the community to develop its brand and market a range of essential oils, soaps and other products, bringing income into the community.



“FASB’s support is a catalyst for improving the environment and generating sustainable income. Expansion and scalability are crucial because the environment needs more people to carry out restoration work and respecting nature. We are grateful and thankful for FASB’s presence in our region, helping us build and fulfil our dreams.”

Osmar Bernardo dos Santos

PRESIDENT OF THE ASSOCIATION OF RURAL PRODUCERS OF THE COMMUNITY OF RIBEIRÃO

Community fire volunteers training

With dry season fires posing a growing threat to forests and community livelihoods in Ghana, we have trained over 180 community fire volunteers (including farmers, young people and at least 30% women) across 17 communities in Atebubu and Sene West. Partnering with the Ghana National Fire Service and Nature and Development Foundation, the training builds on existing local knowledge, equipping volunteers with skills, knowledge and resources to prevent, manage and report fires, and promote safer practices. The initiative aims to empower people to reduce the impact of fire and protect their resource, and to revive a culture of community-led forest protection.

“Seeing our seedlings affected by drought and fire sometimes makes me want to give up after the efforts of carrying and planting because it entails energy and time. However, your persistent engagement on improved good agronomic practices and fire prevention initiatives gives me the hope and energy to continue because I know the beginning of everything is always not easy but with hard work and perseverance, you can overcome the difficulties. So, since you have not given up on us, I will continue to follow your guidance to achieve the needed results.”

Abena Salomey

MANGO FARMER FROM AKENTEN, GHANA



© INOVLAND



© INOVLAND

Lead farmers

In Ghana, we've trained 29 lead farmers from the communities where we work. These farmers take the lead in registering and supporting other farmers who participate in the project, and share best practices through peer-to-peer learning. They participate in the multistakeholder platform meetings and are also involved in planning project activities, designing data collection methods and ongoing monitoring.

“As a lead farmer, this project has benefited me immensely from the capacity building initiatives. I have acquired hands-on practical skills pertaining to agroforestry and good agronomic practices because of the series of trainings organized by the project. This has built my confidence to serve as role model in disseminating the knowledge to farmers in my community. I have also been exposed to digital means of collecting data and information using electronic gadgets such as phones and tablets. These sets of skills will not only benefit the project but also have built me into a person of value for any future roles and responsibilities in my career.”

Elambo Francis

LEAD FARMER FROM KOFIDJAN, GHANA

Integrity and transparency

Optimized resource allocation

At iNovaland, we aim to maximize the impact of the funds we manage. We are committed to directing as much of our financial resources as possible towards on-the-ground reforestation, ecosystem restoration and community development. As of 2024, we have invested €14 million into our projects, resulting in 9,000 hectares restored. Our goal is to secure €33 million by 2030 to restore 18,000 hectares.

To achieve this objective, we maintain low management costs, ensuring efficiency without compromising service quality. We prioritize accountability, environmental impact assessments and adherence to sustainability standards, while also supporting essential infrastructure, research and good governance. Our financial breakdown reflects this commitment:

82%

Implementation costs

On-the-ground project implementation, community engagement and capacity building

18%

Management costs

Monitoring, reporting and compliance, and administrative expenses.



Ethical business practices

Ethical business practices, social and environmental responsibility and respect for human rights are core values for iNovaland. As a formal mechanism for putting our mission and values into practice, we developed a **set of four policies** in 2024, along with a **code of conduct** to ensure alignment among our suppliers. These policies guide our conduct, decisions and actions in the following areas:

- **Anti-corruption and anti-bribery**
- **Human rights**
- **Environmental responsibility**
- **Expense management and procurement**

These corporate policies apply to our employees, associates, business partners, suppliers and the communities where we operate, ensuring ethical and sustainable business practices across our network.

Contribution to Sustainable Development Goals

At iNovaland, sustainability is more than an aspiration; it's the foundation of our work. Through restoring degraded landscapes and building stronger local economies, we contribute directly to the UN SDGs. While it's easy to claim a general contribution to the SDGs, here we identify specific goals where we have made a direct measurable contribution, and also highlight others we contribute to, even though the impacts are not (at least yet) measurable.

Sustainable Development Goals and Direct Impact



46,300 tonnes of CO₂ already sequestered from 2021 to 2024

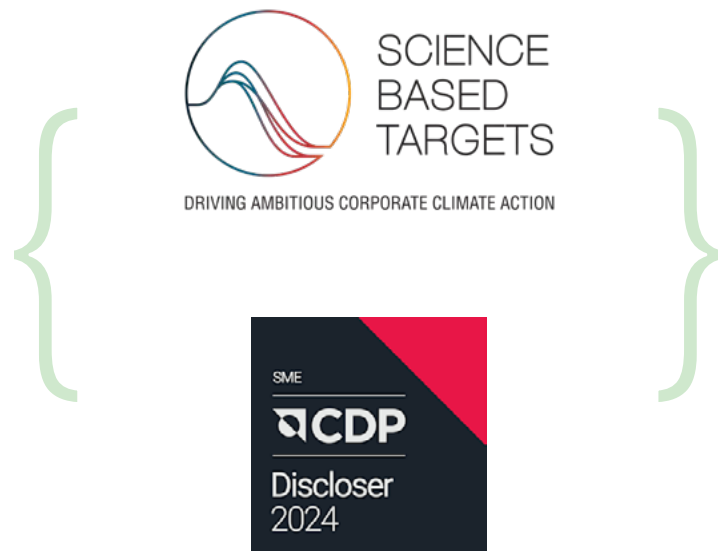


7,788,460 trees planted



Transparency and accountability

Since 2023, we have strengthened transparency and accountability in our sustainability efforts by reporting annually through EcoVadis and CDP. These platforms allow us to assess and communicate our environmental, social and governance (ESG) performance, ensuring we meet industry standards and stakeholder expectations. EcoVadis evaluates our corporate social responsibility practices, while CDP provides a framework for measuring and managing our environmental impact, particularly in areas such as carbon emissions, water security and supply chain sustainability. Additionally, in 2023, we joined the Science Based Targets initiative to align our emissions reduction goals with the latest climate science. By integrating these frameworks into our reporting strategy, we demonstrate our dedication to continuous improvement, responsible business practices and long-term environmental stewardship.



Looking ahead: Accelerating to 2030

By 2030, to double our projected carbon storage capacity

The next five years are a pivotal moment for our planet's future. The year 2030 is the deadline for achieving the SDGs and represents a key milestone in global efforts to combat climate change and halt and reverse the loss of nature.

iNovaland's ambition is clear, to significantly scale our impact and lead the way in climate change mitigation, ecosystem restoration and community adaptation. By 2030, through tree planting and landscape restoration, we aim to double our projected carbon sequestration from 10 million to 20 million tonnes of CO₂*. We commit to achieving these targets while delivering high-quality added value to ecosystems, local communities, donors and partners. We will achieve this vision through:

* While the capacity will be established by 2030, the actual sequestration will occur over many years, expending through to 2050



© COOP LAJE

1

Scaling existing projects to maximize environmental, social and financial returns

2

Developing and incubating a diversified portfolio of new projects across priority and emerging geographies

3

Facilitating knowledge exchange across projects, geographies and partners to drive continuous improvement and innovation.



Study Tour event at Bahia Brazil

© INOVALAND

Scaling existing projects

iNovaland will reinforce existing client relationships and attract additional investments to expand our work in the landscapes and regions we currently operate in. Measurable impacts, quality and integrity are central to us. As we grow and expand our impact, we are combining advanced technologies such as GIS, remote sensing, drones and eDNA, combined with local knowledge, to effectively deliver, monitor and track our impact.

For instance, in the project in Ghana, where we are implementing multiple monitoring technologies, including bioacoustics, eDNA and traditional field ecology to track our impact and ensure we live a positive footprint.

Developing and incubating new projects

iNovaland is continuously exploring new projects and investment opportunities to support the restoration of degraded forest landscapes. We are working to create a portfolio of investment-ready and high-integrity restoration projects.

For instance, we are developing new projects in Ghana and Brazil where we already have established teams and partnerships, for attracting new investors and expanding operations.

Facilitating knowledge exchange

Part of iNovaland's strategy is to provide a platform to project developers, investors, donors and partners, to have first-hand exposure to high-integrity restoration projects. These experiences provide unparalleled insights into how our projects work on the ground, the challenges that local people face and the potential solutions.

An example of this is the iNovaland study tours and Project Acceleration Series. Project Acceleration Series is a collaborative programme between iNovaland and WWF's Bankable Nature Solutions Network. The programme was launched in early 2023, designed to bring together an ecosystem of stakeholders to exchange knowledge and scale the impact of forest, ecosystem restoration and responsible agriculture projects.

“We have been fortunate to participate in two study tours. From attending online meetings and reading reports, we have been updated on the numbers of trees planted and the number of people involved. But understanding how hard people are working on their projects and how dedicated they are to do reforestation on their land – that's something you can only experience in person, and it has been very inspiring to witness.

Christina Fevejle Nielsen

KIRKBI

Thank you from us

iNovaland's mission transcends simple tree planting; it's about people, partnerships and a shared vision for a healthier planet.

To our dedicated donors, partners and investors, your trust and commitment enable us to transform degraded lands into thriving ecosystems and empower local communities to create a better future. To the farmers, community leaders and stakeholders on the ground, your resilience, knowledge and stewardship are the foundation of everything we do. To our technical teams, researchers and facilitators, you are the driving force behind innovation and excellence in our restoration work.

We have come a long way over the past five years, and our impact continues to grow: millions of trees planted, thousands of degraded hectares restored, hundreds of farmers trained, new community enterprises launched. We've shown that our forest restoration projects can transform lives and landscapes at a local level, while making a meaningful contribution to global climate and biodiversity goals. But the journey does not end here. The need for landscape and ecosystem restoration has never been more urgent – and we remain committed to further expanding and accelerating our impact and delivering environmental and socioeconomic value.

Thank you for believing in our mission and joining us on this journey.





Connect with us

EMAIL : info@inovaland.earth

WEBSITE : inovaland.earth

LINKEDIN : [linkedin.com/company/inovaland-group](https://www.linkedin.com/company/inovaland-group)

Registered offices

United Kingdom

Third Floor, 20 Old Bailey
London
EC4M 7AN

Portugal

Avenida da Republica, 50, 10º
1069-211 Lisbon

Head office

Brazil

Rua Assis Chateaubriand, 68
Central Park, Loja 36
Centro
Cep: 45810-000
Porto Seguro - BA

Project office

Ghana

Atebubu Living Lab
House Number AWD1
Bono East
Atebubu

Seeds produced by the FASB project in Brazil



Restoring landscapes for people and planet



www.inovaland.earth